

SmartScan

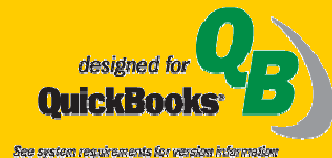
By Baus Systems

SmartScan Barcode Translator Demo

Add the power of barcoding to QuickBooks



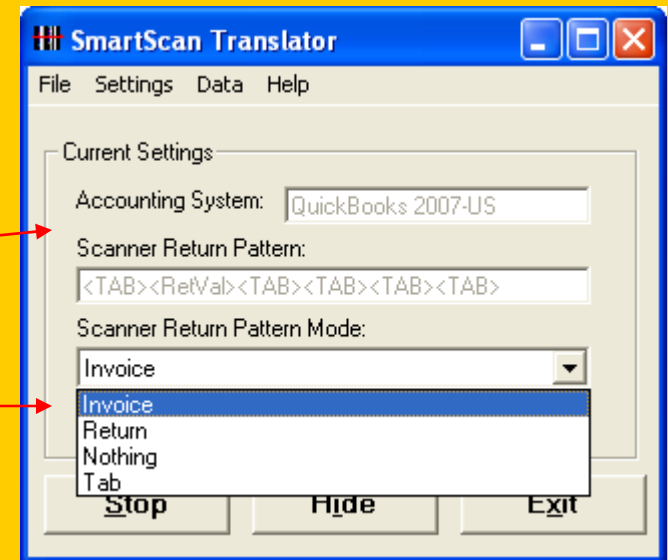
An overview of using SmartScan
Barcode Translator with QuickBooks



www.baus-systems.com/smartsan.html
john.palios@baus-systems.com (206) 932-9986

SmartScan Barcode Translator

This is the main screen of Barcode Translator. It shows which QuickBooks version is in use and what the cursor will do before and after each scan (the scan return pattern).

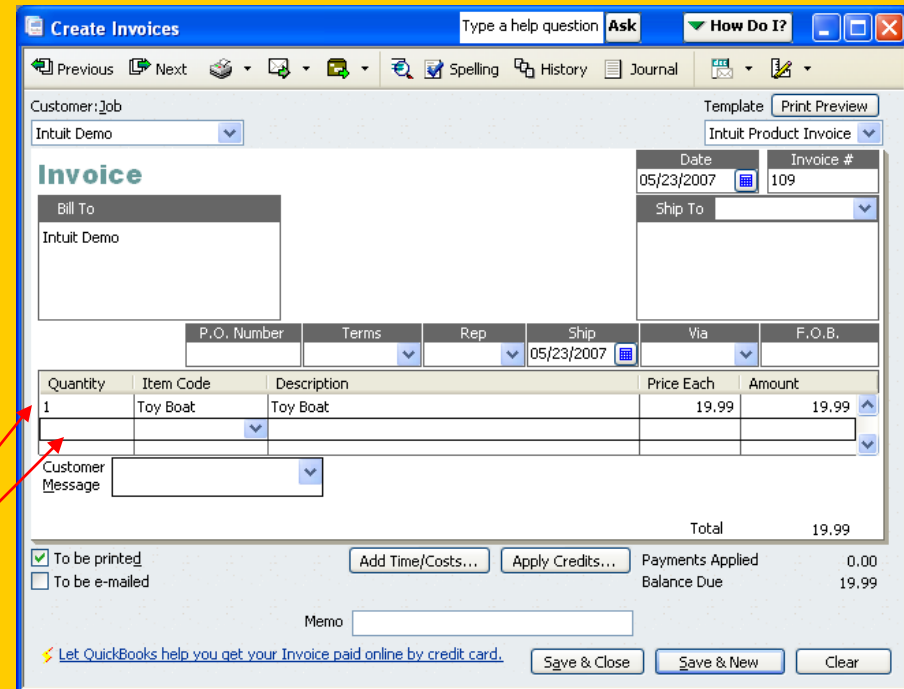
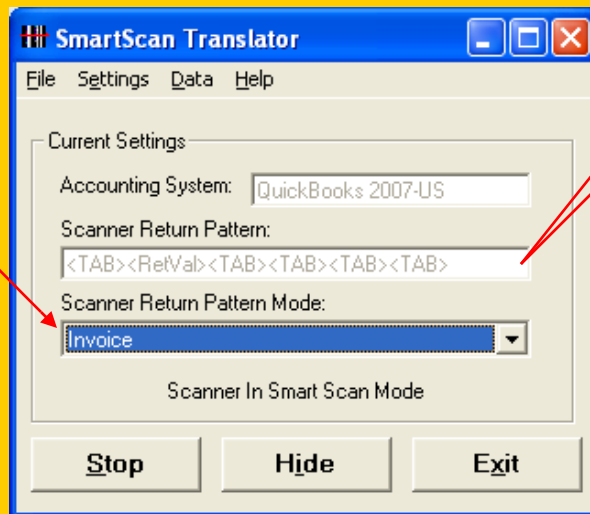


Barcode Translator must be open to operate the scanner and it will hide in the background when scanning into QuickBooks transactions.



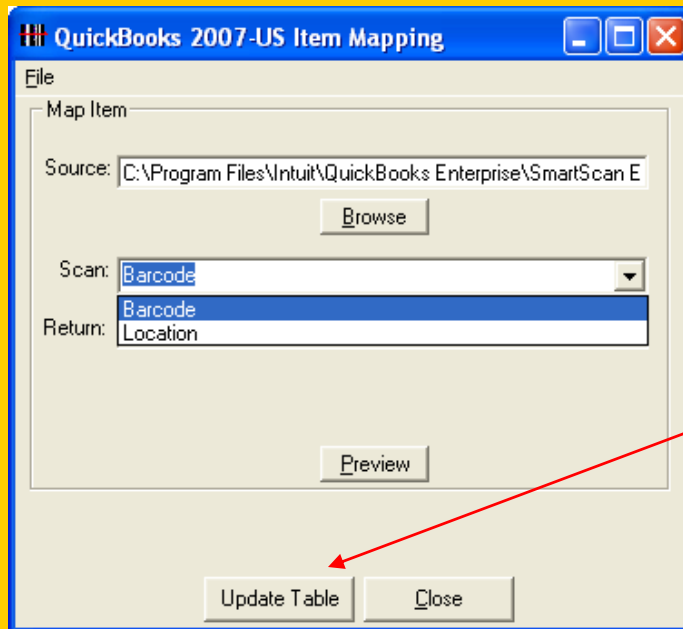
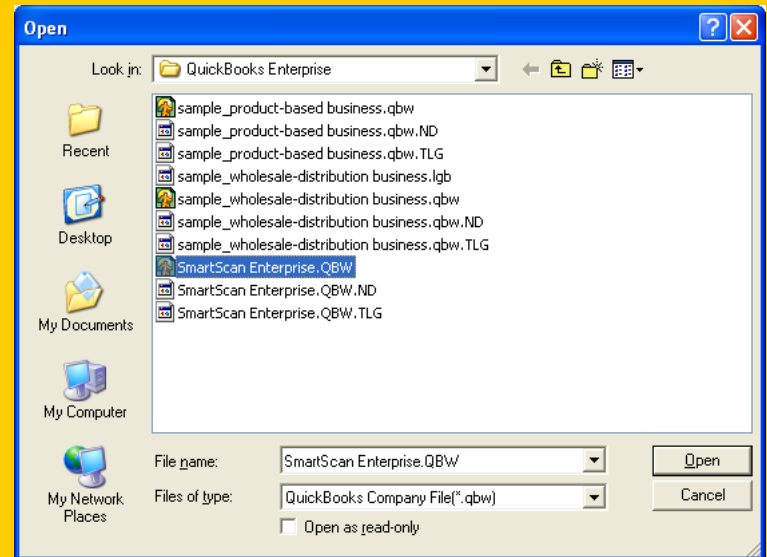
SmartScan Barcode Translator

In this case we have created a custom scan pattern we named "Invoice" to tab first, enter the item scanned, then tab 4 more times to leave the cursor in the next quantity field. This enables continual scanning of items.



SmartScan Barcode Translator

Connecting to QuickBooks is easy. Just browse to the open company file and choose the custom field created in your item list for the bar code.



Click to update the Translation Table and you're ready to scan!

SmartScan Barcode Translator

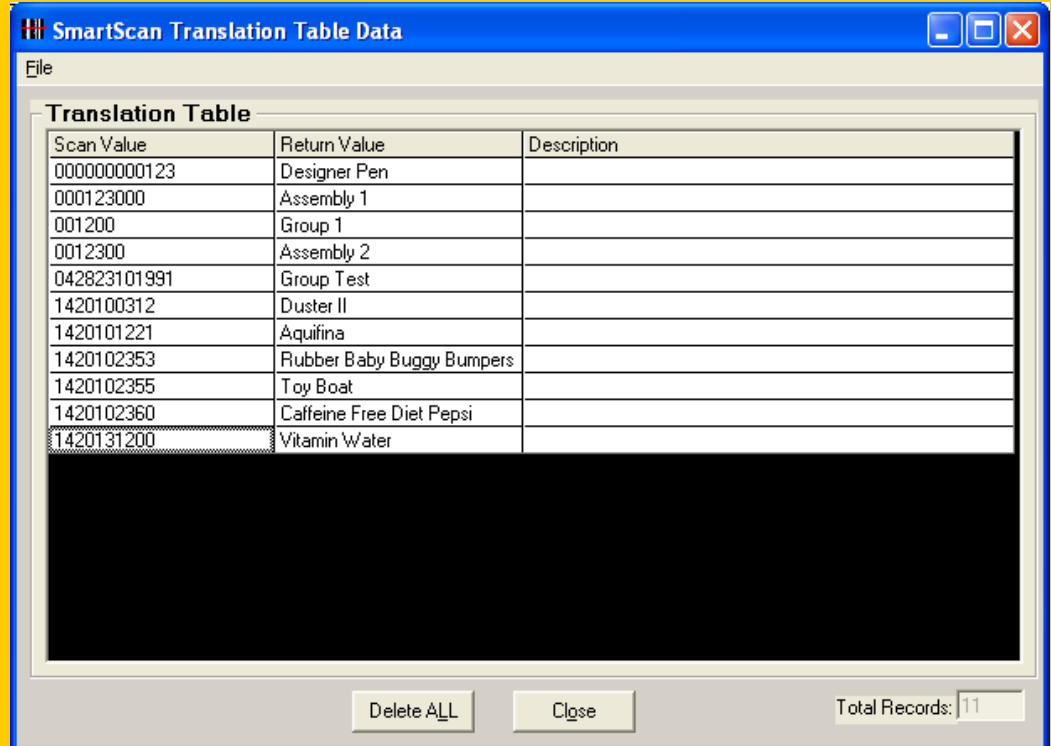
Barcode Translator can be used to scan items in any screen of QuickBooks that has an Item field.

The image displays three overlapping screenshots of the QuickBooks software interface, illustrating the SmartScan Barcode Translator functionality. Each screenshot shows a different screen where an 'Item' field is present, and a red circle highlights this field to indicate where the barcode translator can be used.

- Top Left: Create Credit Memos/Refunds**
The 'Credit Memo' screen shows a 'Customer' dropdown menu and an 'Item' dropdown menu. The 'Item' dropdown menu is circled in red.
- Top Middle: Create Purchase Orders**
The 'Purchase Order' screen shows a 'Vendor' dropdown menu and an 'Item' dropdown menu. The 'Item' dropdown menu is circled in red.
- Top Right: Create Item Receipts**
The 'Create Item Receipts' screen shows a 'Bill' or 'Credit' radio button and a 'Bill Received' checkbox. Below this, there is a table with columns for 'Expenses', 'Items', and 'Total'. The 'Item' dropdown menu in the table is circled in red.

SmartScan Barcode Translator

Barcode Translator makes its own “Translation Table” pairing the assigned bar code number with each corresponding item in QuickBooks. This is what facilitates the translation process.



SmartScan Translation Table Data

File

Translation Table

Scan Value	Return Value	Description
000000000123	Designer Pen	
000123000	Assembly 1	
001200	Group 1	
0012300	Assembly 2	
042823101991	Group Test	
1420100312	Duster II	
1420101221	Aquifina	
1420102353	Rubber Baby Buggy Bumpers	
1420102355	Toy Boat	
1420102360	Caffeine Free Diet Pepsi	
1420131200	Vitamin Water	

Delete ALL Close Total Records: 11

SmartScan Barcode Translator

Barcodes may be entered into Quickbooks by using an existing barcode or creating your own barcode and scanning/entering it into an "item" custom field in QuickBooks. To expedite barcode entry, use the free "Custom Field Manager" described in the next slide.

The screenshot displays the QuickBooks Enterprise Solutions 8.0 interface. The main window shows a list of items with columns for Name, Description, Location, Barcode, and Price. The 'Edit Item' window for 'P5047-33 Ceiling' is open, showing various fields for item configuration. A 'Custom Fields for P5047-33' dialog box is open, showing the 'Location' field set to 'R05 511' and the 'Barcode' field set to '2121100012'. A red arrow points from the text above to the 'Barcode' field in the dialog box.

Name	Description	Location	Barcode	Price
Deposit	Customer Deposits			
Shipping				
Bath				
5029...	Brushed Nickel w/ Opal ...	R10 508	2250512111	
5030...	Solid Brass w/ Etched Gl...	R10 509	2250512011	
5030...	Solid Brass w/ Etched Gl...	R10 506	2250512211	
6520...	White w/ Satin White Glass	R10 507	2250512411	
P3261...	Pearl Nickel, 5 Light	R10 505	2250512511	
P3298...	Polished Chrome, 4 Light	R10 504	2250512311	
P3335...	Polished Brass, 6 Light	R10 510	2250512611	
5G 47...	Beveled Mirror w/ Etche...	R10 503	2250512711	
Bulbs				
F20T1...	Fluorescent Lamp, Medi...	1420101221	016000189805	
F5004...	Fluorescent Lamp, Larg...	1420100312	025500063195	
H03000	Halogen Lamp, 3.5 Volts...	1420102353	011194388072	
H4193...	Halogen, 20 watts	1420102355	086600230108	
HY20C...	Cand. Light, 20 watts (8...	1420131200	041163511309	
MSD200	100 watt (6 pack)	1420102360	041196891027	
MSR1...	Stage & Studio, 60 watt...	1420109900	018579186742	
Bundle				
Ceiling				
2014...	Brass Pendant with Ribb...	R05 501	2121100005	
2032-02	Desert Stone Finish	R05 503	2121100010	
2046...	Brushed Nickel Pendant ...	R05 502	2121100003	
2116...	Tapestry with Etched Gl...	R05 504	2121100001	
6012...	Brushed Nickel with Ribb...	R05 506	2121100002	
COL12...	Steel Colonial with Opal ...	R05 505	2121100011	
COL16...	Gold Colonial	R05 507	2121100013	
P3310...	Millstone Finish, 1 light	R05 508	2121100004	
P3587...	Copper Verde, Seeded ...	R05 509	2121100006	
P5038...	Textured White Pendant	R05 510	2121100008	
P5047...	Cobblestone Pendant wi...	R05 511	2121100012	

SmartScan Custom Field Manager is a free program that gives an interactive spreadsheet view of the QuickBooks Item List to expedite bar code entry. Bar codes can be scanned or entered manually. Custom field changes can be saved and updated in QuickBooks all at once.

Custom Field Manager

File Edit View

Item	Descriptio	Barcode	Color	Location	Material
▶ Cabinets	Cabinets	+	(null)	(null)	(null)
Cabinets:	Cabinet P	12345	(null)	A-09	(null)
Cabinets:	Light pine	123456	(null)	F-05	(null)
Door Fra	standard i	1234567	(null)	C-08	(null)
Hardware	(null)	12345678	(null)	L-02	(null)
Hardware:	standard i	12345678	(null)	S-06	(null)
Hardware:	Doorknob	2234	Natural	B-02	Brass
Hardware:	Locking in	22345	Natural	D-10	Chrome
Wood Do	Doors	223456	(null)	E-07	(null)
Wood Do	Exterior d	2234567	Dark Brow	G-01	Wood
Wood Do	Interior do	22345678	White	G-02	Wood
Appliance	Appliance	(null)	(null)	(null)	(null)
Cabinets -	Custom c	(null)	(null)	(null)	(null)
Counter	Custom m	(null)	(null)	(null)	(null)
Flooring	(null)	(null)	(null)	(null)	(null)
Fluoresce	Fluoresce	(null)	(null)	(null)	(null)
Lighting	Lighting	(null)	(null)	(null)	(null)
Lumber	Lumber	(null)	(null)	(null)	(null)
Lumber:D	Decking lu	(null)	Red	(null)	Redwood
Lumber:R	Rounh lu	(null)	(null)	(null)	(null)

Save Reload Close

Custom Field Manager

File Edit View

Customer	B-Day	Contract #	Spouse's Name
▶ Abercrombie, K	1/1/65	(null)	Tim
Abercrombie, K	(null)	(null)	(null)
Abercrombie, K	(null)	(null)	(null)
Abercrombie, K	(null)	1097-02-KABE	(null)
Baker, Chris	(null)	03-1234567	(null)
Baker, Chris:Fa	(null)	03-1234567	(null)
Balak, Mike:Util	(null)	(null)	(null)
Barley, Renee	(null)	(null)	(null)
Barley, Renee:	(null)	(null)	(null)
Bolinski, Rafal	(null)	(null)	(null)
Bolinski, Rafal:	(null)	(null)	(null)
Bristol, Sonya	(null)	(null)	(null)
Bristol, Sonya:	(null)	B03-12345678	(null)
Bristol, Sonya:	(null)	B03-12345678	(null)
Burch, Jason	(null)	(null)	(null)
Burch, Jason:R	(null)	0309-1256	(null)
Burney, Tony	(null)	(null)	(null)
Burney, Tony:R	(null)	(null)	(null)
Crnk, Brian	10/8/60	(null)	Carni

Save Reload Close

Customer information can also be modified.

SmartScan

By Baus Systems

John Palios

SmartScan Sales

john.palios@baus-systems.com

(206) 932-9986



1 234567 890128

www.baus-systems.com/smartscan.html